
WizFi360

Firmware Update Guide

Version 1.0

WIZnet Co.,Ltd

Copyright© 2019

History

Ver	Date	Description
1.0	Aug.2019	Initial version

- 1. The method of firmware update4
 - 1.1 Using the Upgrade tool.....4
 - 1.1.1 Required hardware and software4
 - 1.1.2 How to download the firmware using the Upgrade Tool(Serial)4
 - 1.1.3 How to download the firmware using the Upgrade Tool(Wi-Fi).....6

1. The method of firmware update

WizFi360 supports firmware update by AT command using UART and ISP method by UART.

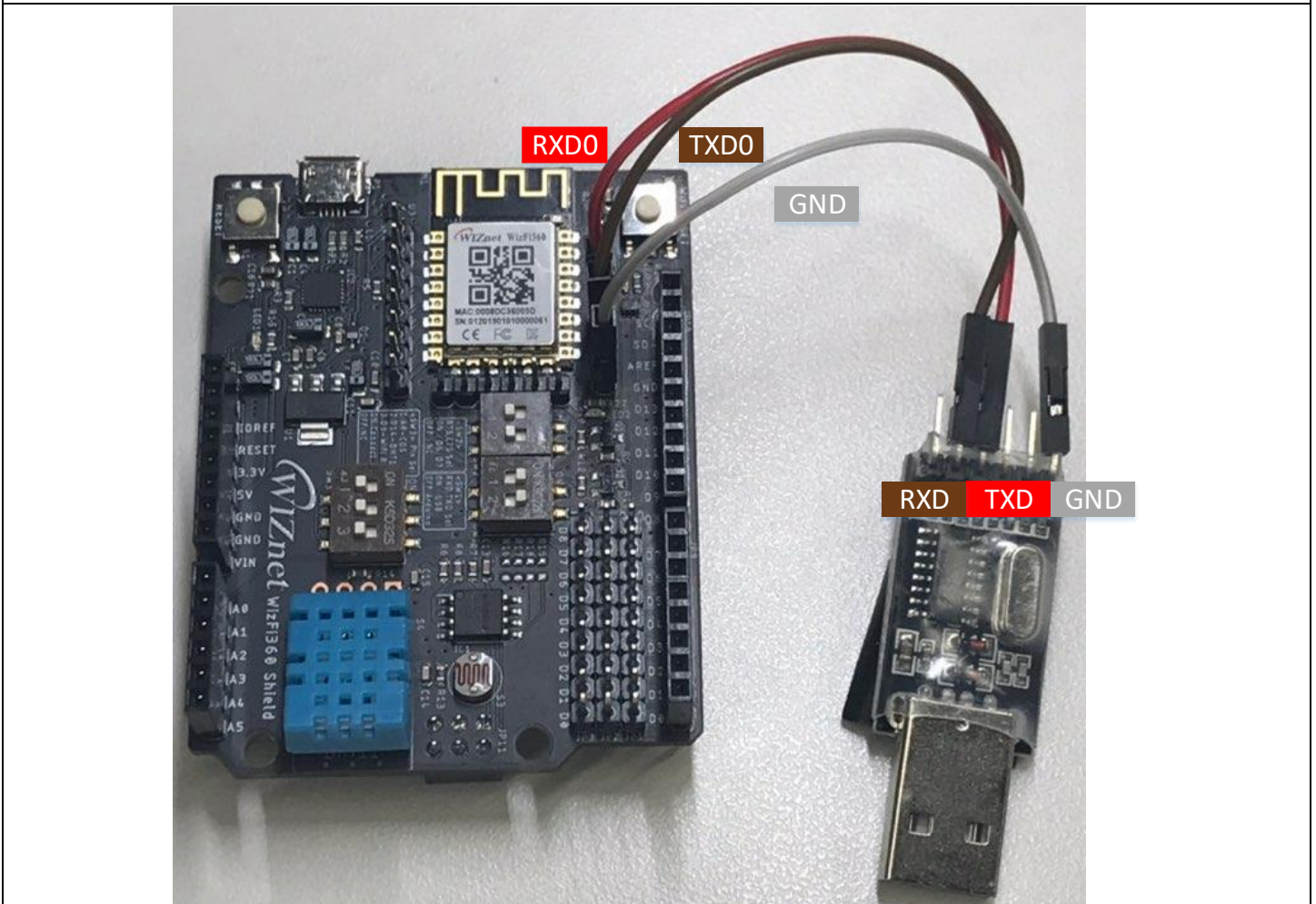
1.1 Using the Upgrade tool

1.1.1 Required hardware and software

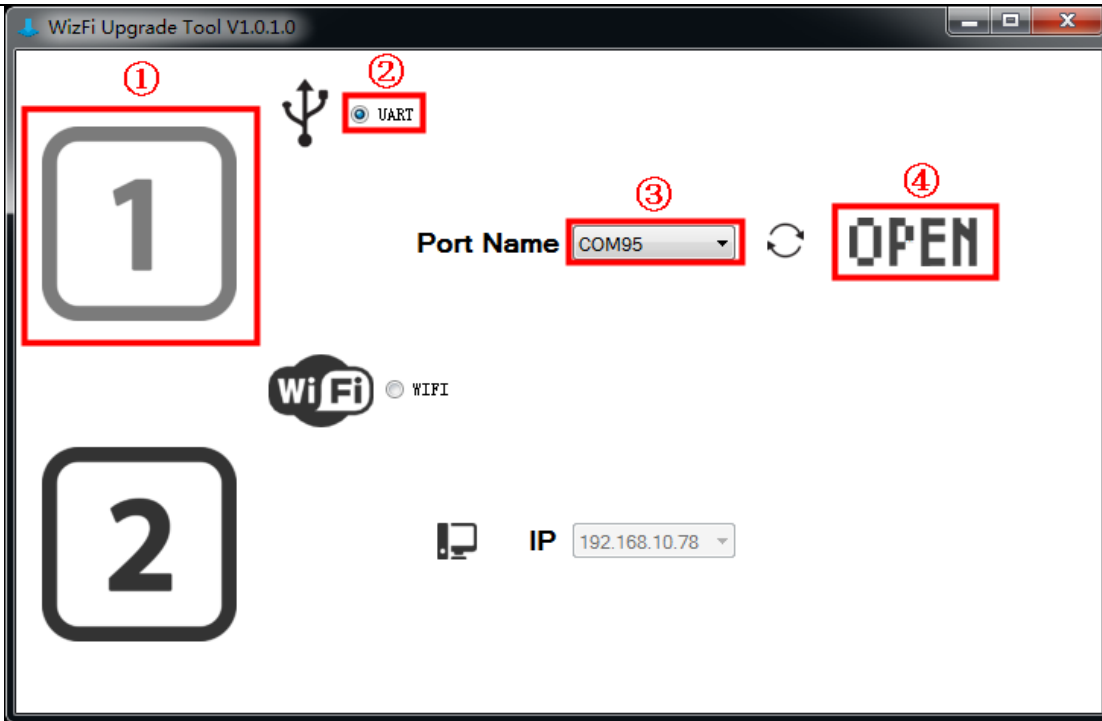
- WizFi360-EVB
- WizFi Upgrade Tool
- TTL to USB module
- WizFi360 Firmware : xxx.bin

1.1.2 How to download the firmware using the Upgrade Tool(Serial)

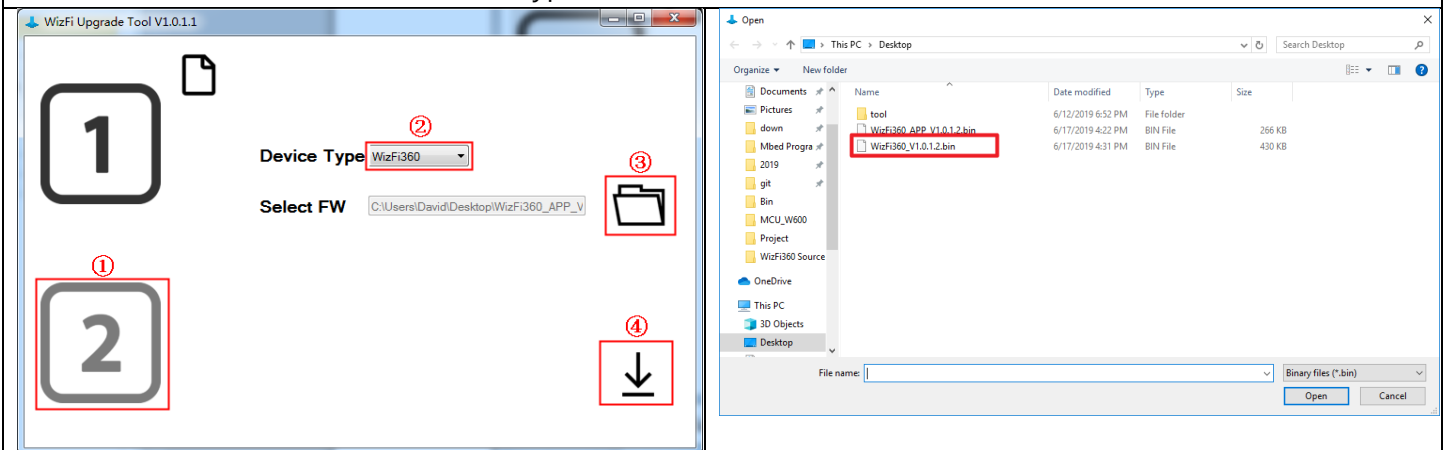
1. Use UART0 of WizFi360 to upload the Firmware and it connects the WizFi360 to the TTL to USB is as below.

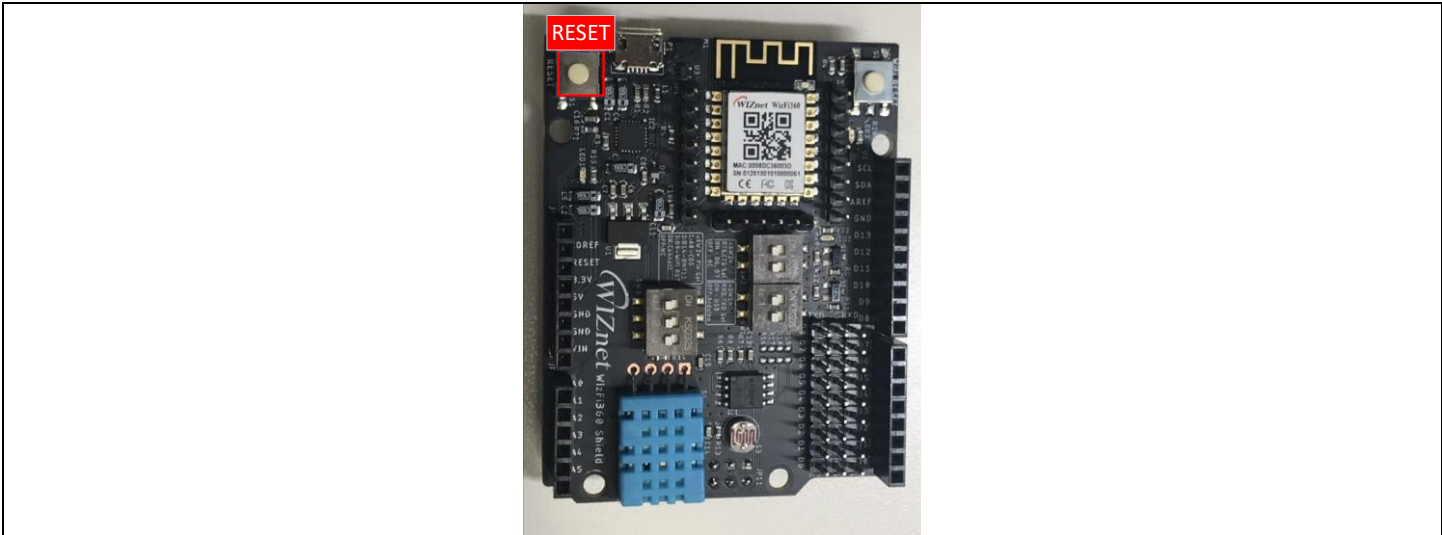


2. Open the WizFi Upgrade Tool and Open the Serial port of WizFi360.

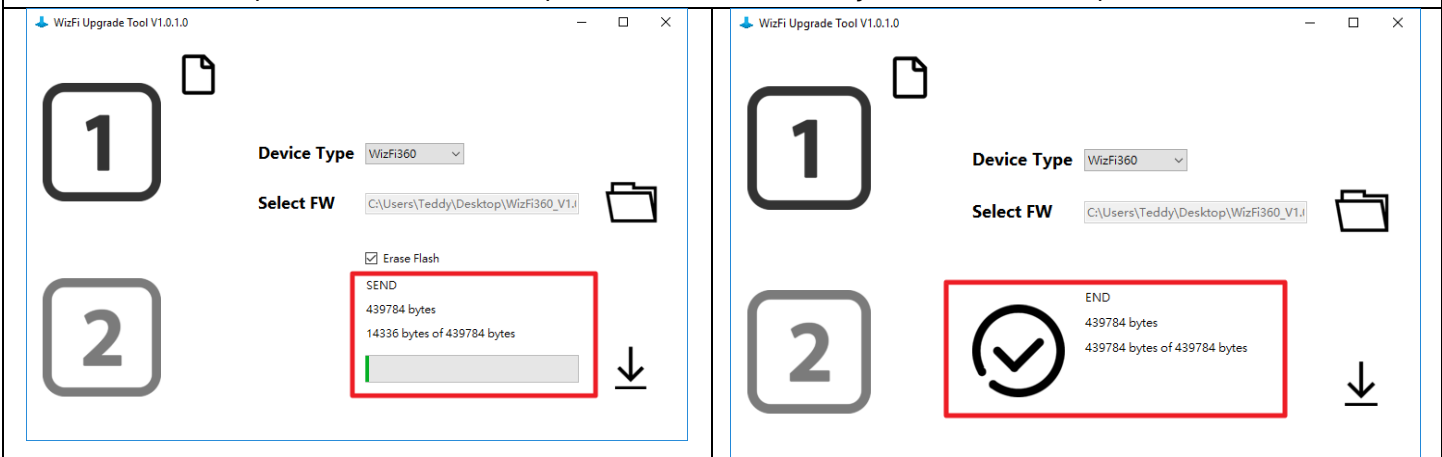


3. Select the WizFi360 in Device Type and xxx.bin as WizFi360.



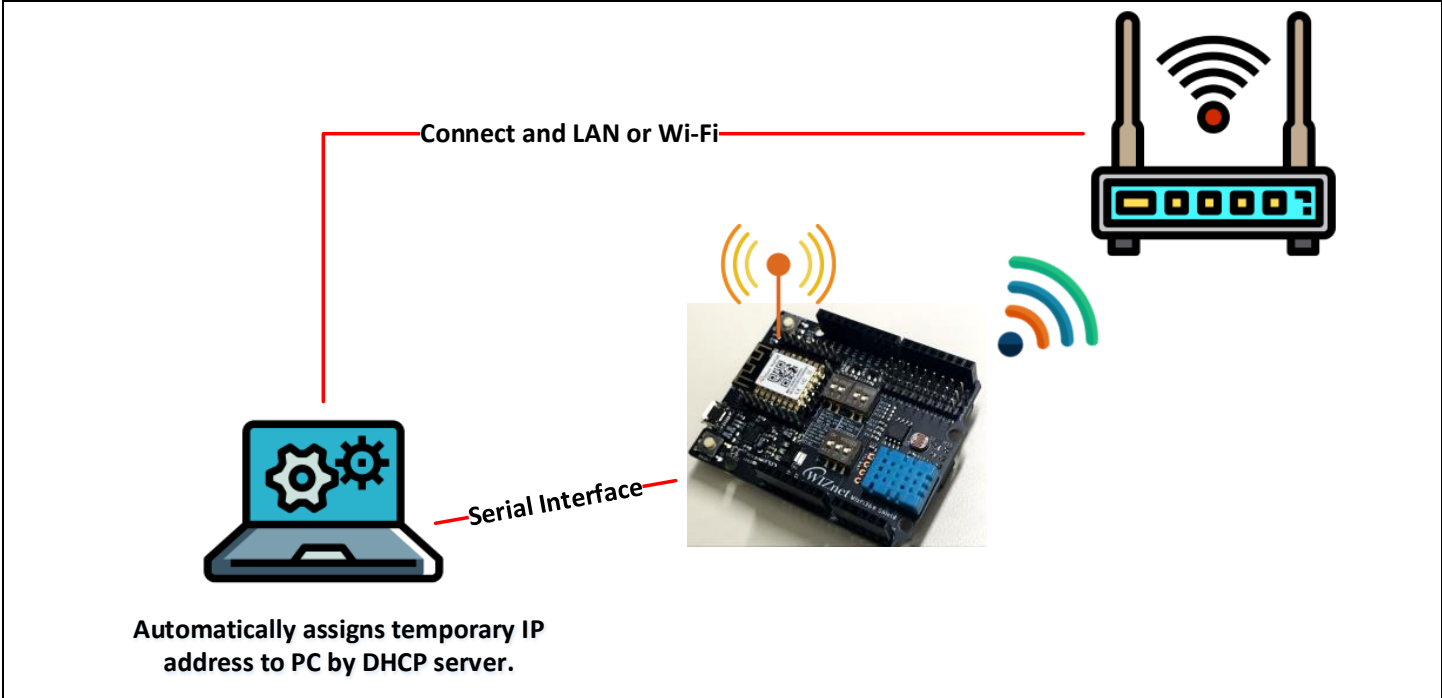


4. It has completed the firmware upload of WizFi360 and you can see the uploaded firmware size.



1.1.3 How to download the firmware using the Upgrade Tool(Wi-Fi)

1. Use UART0 of WizFi360 to upload the Firmware and it connects the WizFi360 to the TTL to USB is as below. WizFi360 and PC assigned the IP from Router that is having DHCP Server.



```

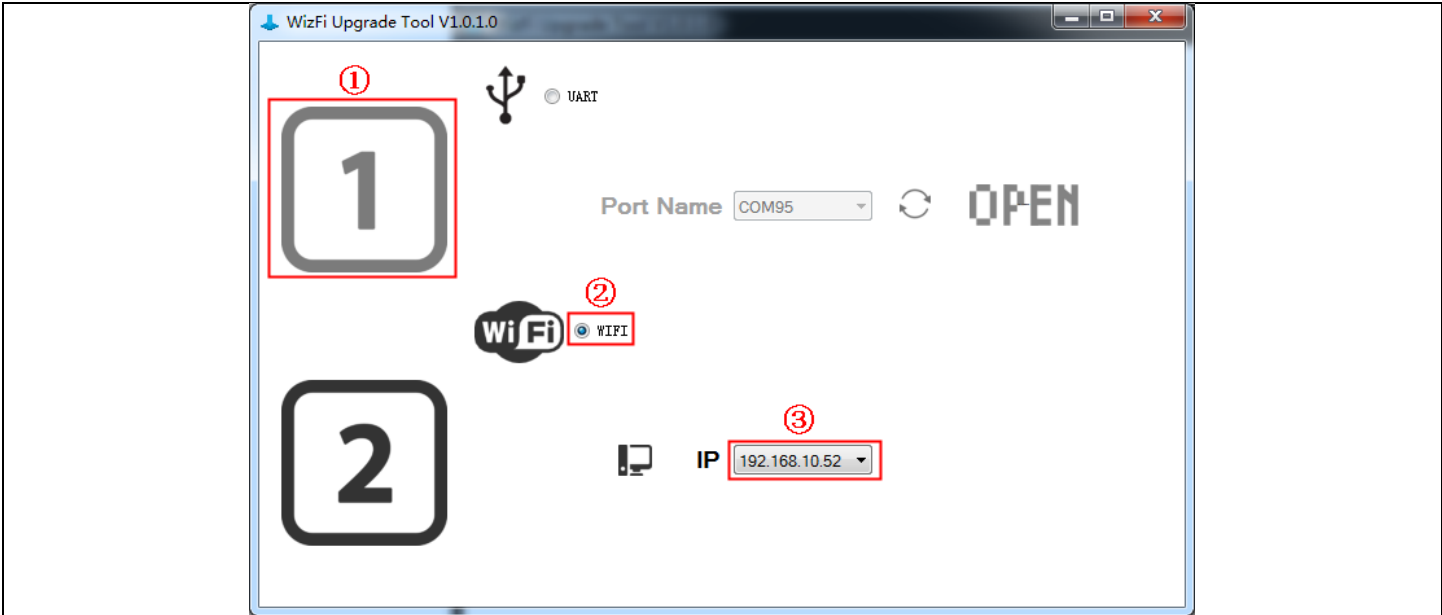
AT
AT

OK
AT+CWLAP
AT+CWLAP
+CWLAP:(3,"##WIZnet_irina",-55,"64:e5:99:b8:60:5a",1)
+CWLAP:(4,"DIR-815_Wiznet",-65,"14:d6:4d:cf:fa:a7",1)
+CWLAP:(3,"Matthew2.4",-57,"88:36:6c:be:8a:3a",2)
+CWLAP:(3,"rena",-57,"88:36:6c:6e:ac:28",3)
+CWLAP:(0,"iptime",-59,"88:36:6c:7d:79:44",4)
+CWLAP:(3,"Taylor",-55,"00:08:9f:50:1a:36",6)
+CWLAP:(3,"Dap",-63,"88:36:6c:e8:32:9e",8)
+CWLAP:(4,"DLINK-IPv6",-51,"cc:b2:55:d2:19:a2",10)
+CWLAP:(3,"WIZnet_Scott",-57,"18:a6:f7:56:73:2e",11)
+CWLAP:(3,"wizms1",-59,"e8:fc:af:fd:a2:85",11)
+CWLAP:(0,"iptime",-65,"64:e5:99:a4:e3:6c",11)
+CWLAP:(3,"Teddy_AP",-51,"90:9f:33:21:e5:00",13)

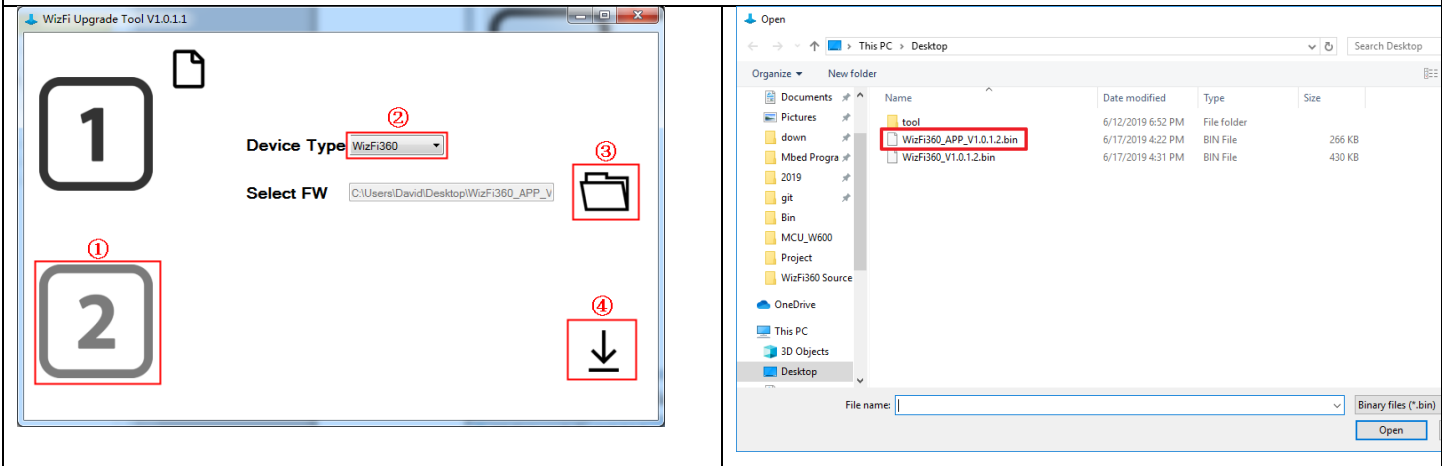
OK
AT+CWJAP_CUR="Teddy_AP","12345678"
AT+CWJAP_CUR="Teddy_AP","12345678"
WIFI CONNECTED
WIFI GOT IP

OK
  
```

2. Press the WiFi button in the WizFi Upgrade Tool. Click the Update IP list and select the IP of PC.



3. Select the WizFi360 in Device Type and xxx.bin as WizFi360.



4. It has completed to ready the Firmware upload of wizfi360. The firmware upgrade using the AT command.

The screenshot shows the 'WizFi Upgrade Tool V1.0.1.0' window. It features two numbered steps: Step 1 (a document icon) and Step 2 (a checkmark icon). In Step 2, a 'Transmission END' message is highlighted in a red box. The interface includes a 'Device Type' dropdown menu set to 'WizFi360' and a 'Select FW' text box containing the path 'C:\Users\Teddy\Desktop\WizFi360_APF'. A folder icon is positioned to the right of the 'Select FW' box, and a download arrow icon is located below it. At the bottom, a terminal window displays the following text:

```
AT+CIUPDATE="http://192.168.0.2:8080/upgrade.up"  
AT+CIUPDATE="http://192.168.0.2:8080/upgrade.up"  
+CIUPDATE:1  
+CIUPDATE:2  
+CIUPDATE:3  
+CIUPDATE:4  
OK  
ready
```