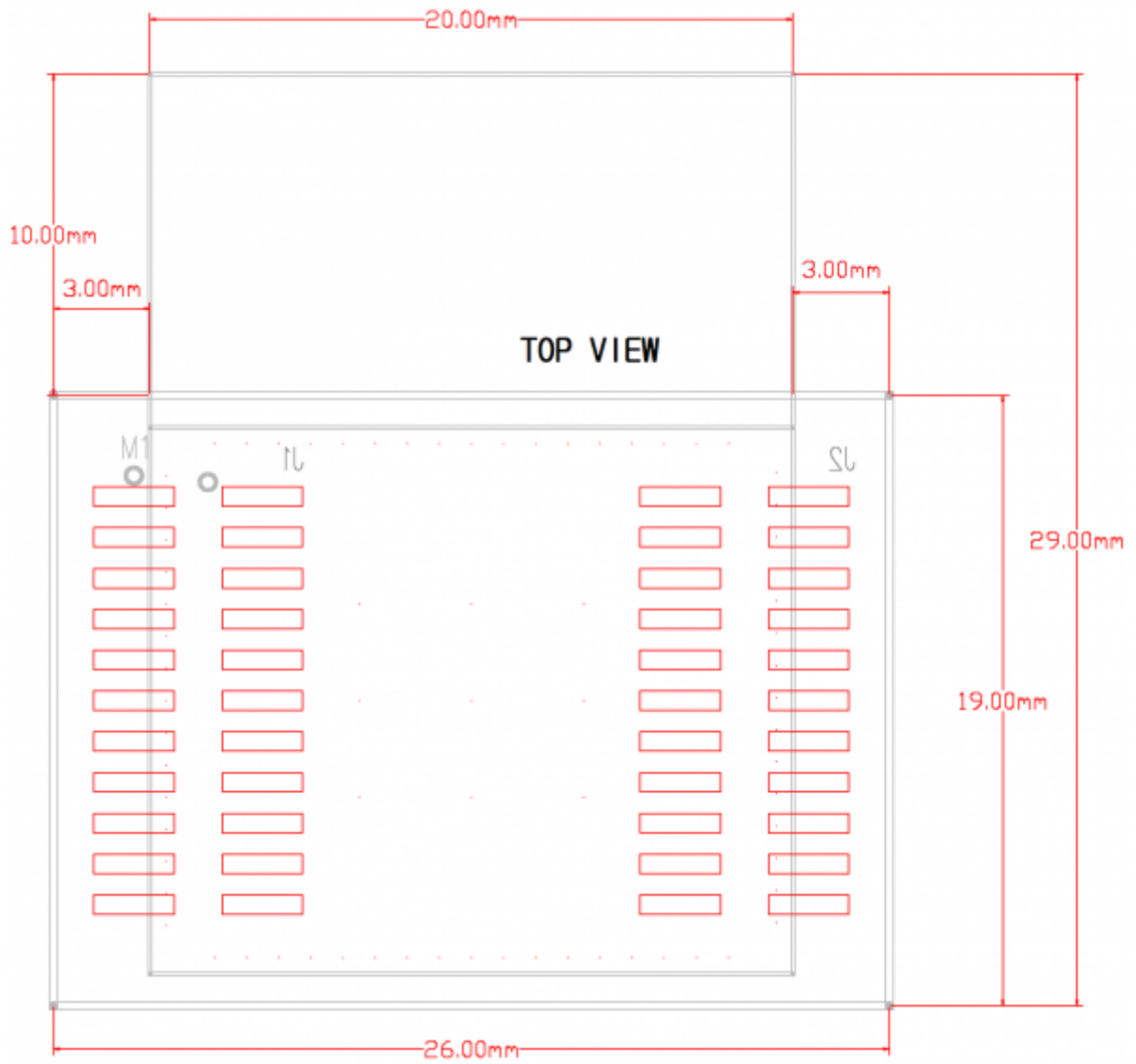
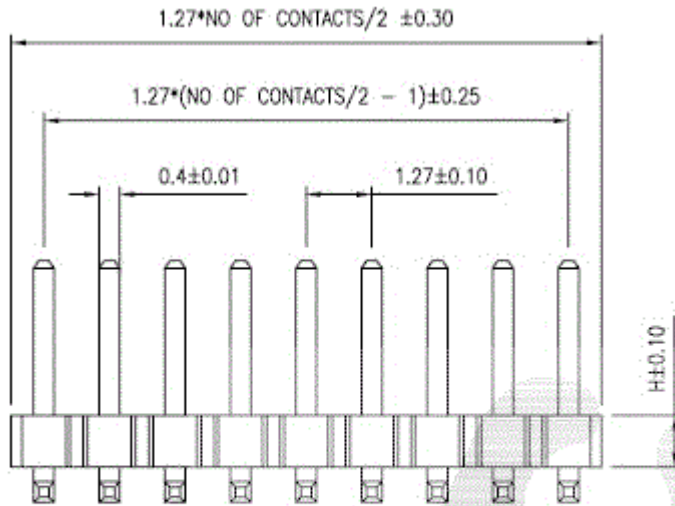


Table of Contents

WizFi250 EVB & IF Dimension	1
<i>WizFi250 Evaluation Board Dimension</i>	1
<i>WizFi250 Interface Board Dimension</i>	1
WizFi250 Interface Board Dimension	1
WizFi250-H Dimension	2
Using Pin Header Dimension	3

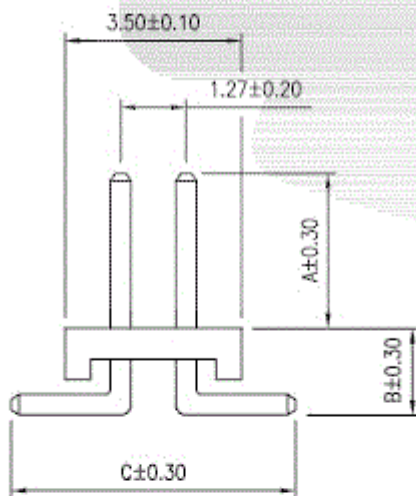


Using Pin Header Dimension



SPECIFICATION

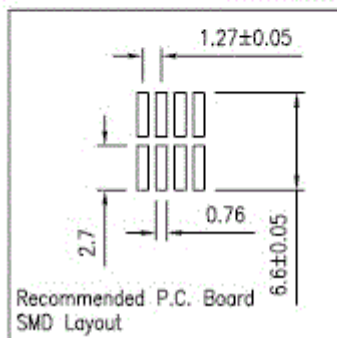
- * Current Rating: 1 A
- * Withstanding Voltage: 600 VAC (1 - min.)
- * Insulation Resistance: 1000 Megohms MIN.
- * Contact Resistance: 30 Milliohms MAX.
- * Operating Temperature: -40°C to +85°C
- * Retention Force: 450g MIN.



MATERIAL

- * Contact: Phosphor Bronze , 0.40mm square post
- * Insulator: NYLON 66 + 30% G.F.
- * Plating: All Gold

Number of Pin
*80Pin



Base Height

Base	H
1	1.00
2	1.20
3	1.50
4	2.00
5	2.50
6	3.00

Pin Chart

Pin	A	B	C
1	3.00	1.27	5.50
2			
3			
4			
5			
6			

From:
<http://wizwiki.net/wiki/> -

Document Wiki

Permanent link:
<http://wizwiki.net/wiki/doku.php/products:wizfi250:wizfi250evbdimension:start>

Last update: 2015/03/16 10:33

