

# Table of Contents

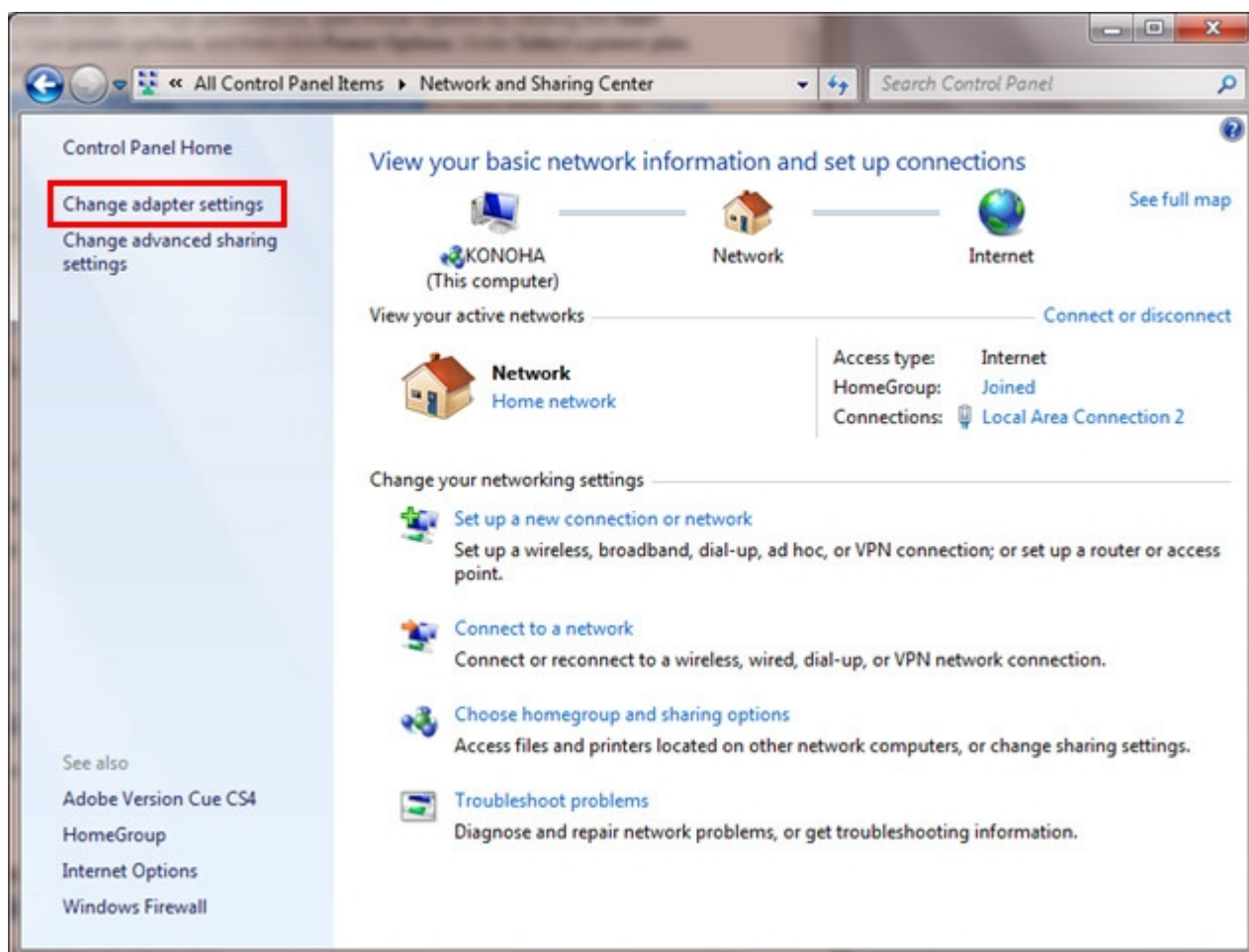
<b>IP Configuration</b> .....	1
<i>IP configuration in PC</i> .....	1

# IP Configuration

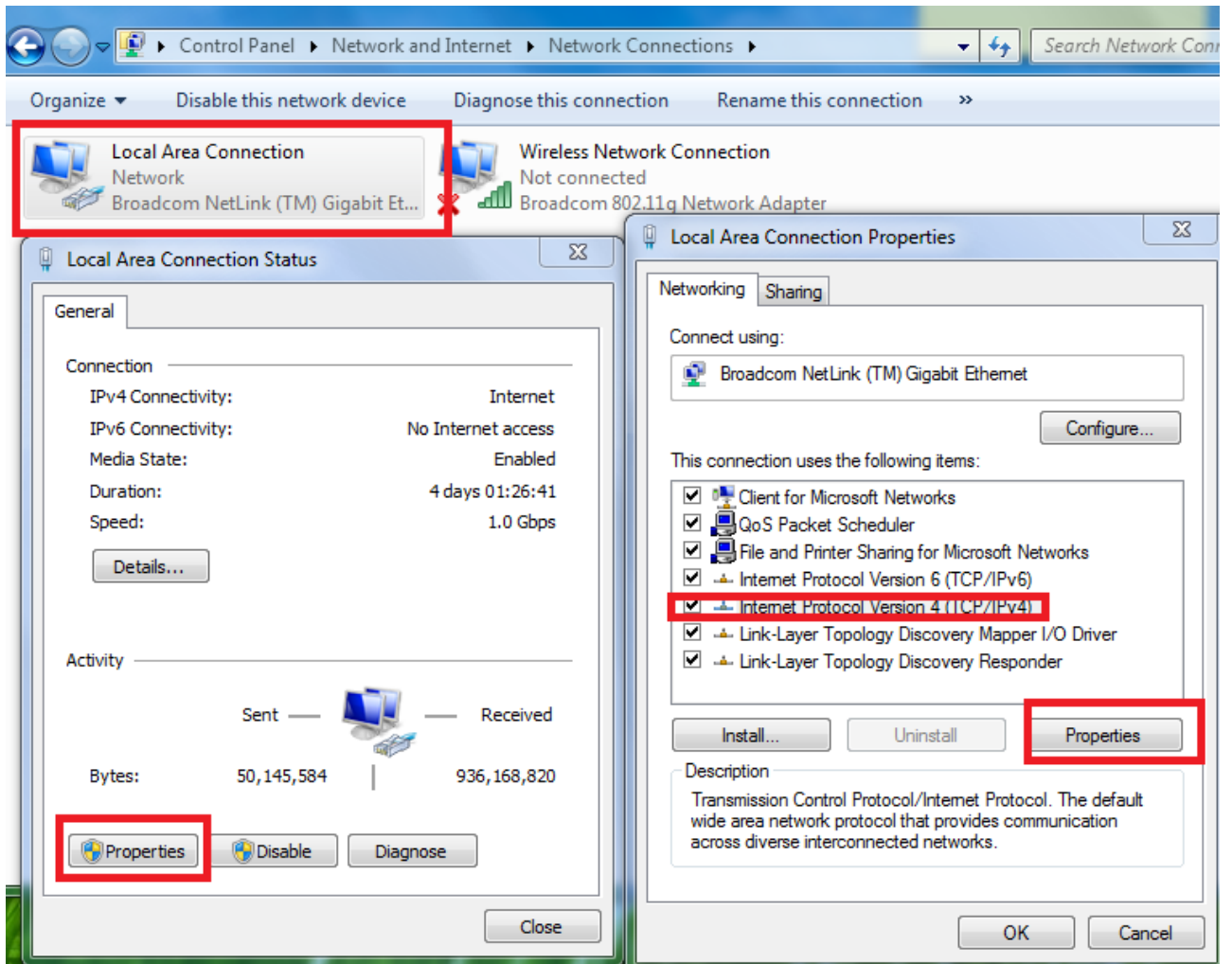
## IP configuration in PC

If IP address of your PC and WIZ550io are different, you need to configure your PC network setting.

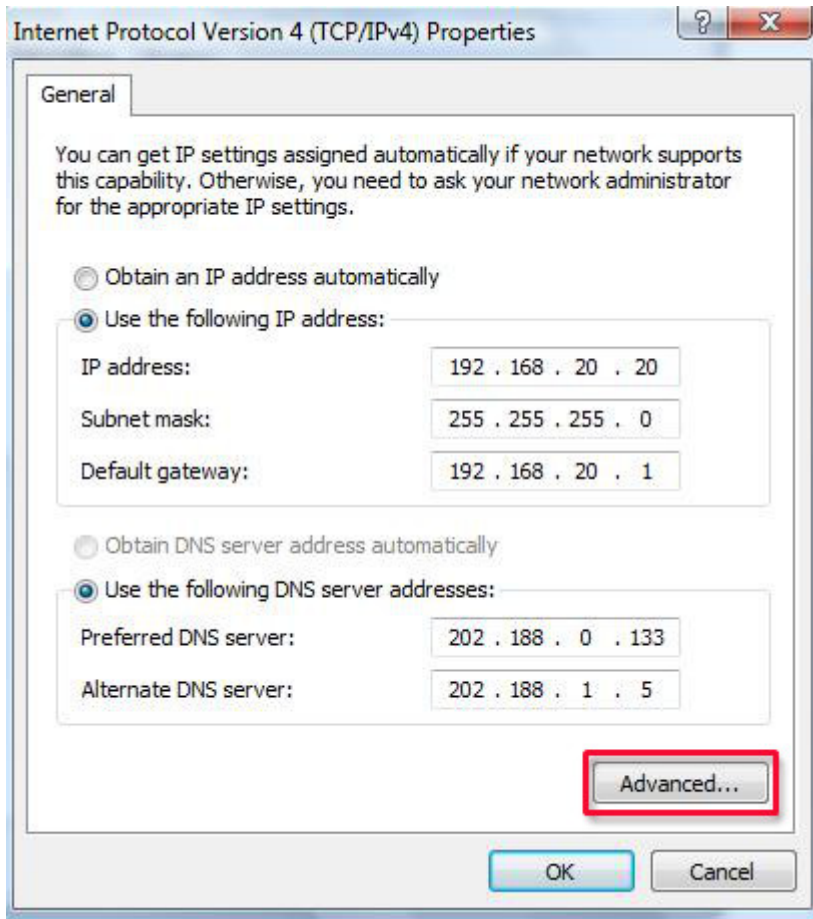
- Click on the Start Menu and open the Control Panel.
- Enter to 'Network and Internet' and enter to Network and Sharing Center.
- Click 'Change adapter settings' at left side.



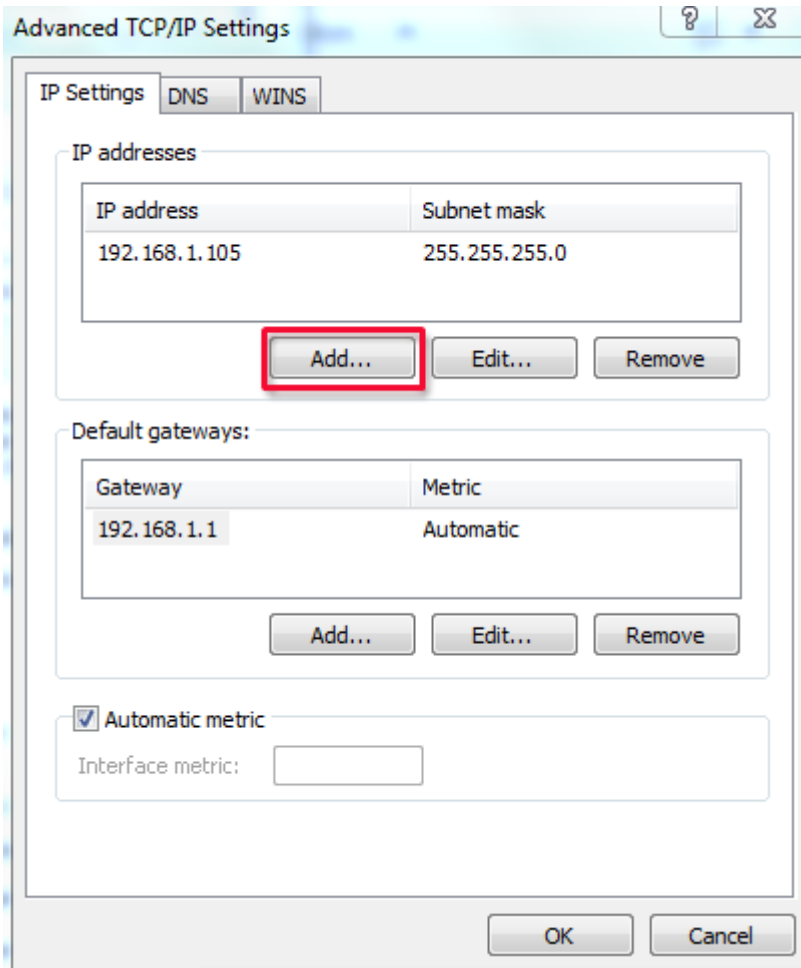
- Double click Local Area Connection icon and click Properties and enter IPv4 Properties.



- Then, set your IP address and subnet mask as same as WIZ550io's IP address and subnet mask.
- Or, you can add IP address by setting Advanced. Click Advanced.. button.



- Click Add... button and add IP address and subnet mask.



From:  
<http://wizwiki.net/wiki/> -

## Document Wiki

Permanent link:  
[http://wizwiki.net/wiki/doku.php/osh:cookie:ip\\_conf\\_b](http://wizwiki.net/wiki/doku.php/osh:cookie:ip_conf_b)

Last update: 2015/03/16 10:33

