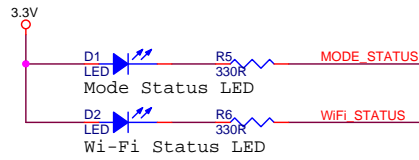
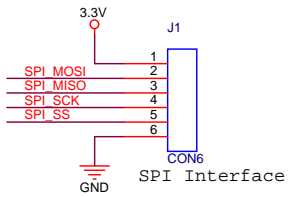
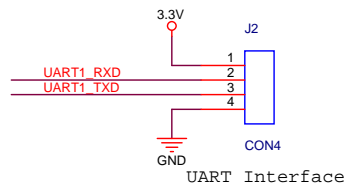
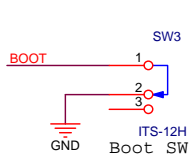
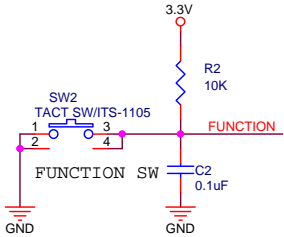


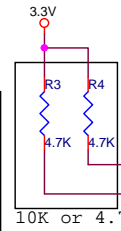
MIC811SUY is reset ic.
 Instead have to mount R11 if not mount U2.



This circuit needs when you updating firmware.
 You cannot do the firmware upgrade, if there is no this circuit.
 WIZnet don't accept liability, if this situation happens.



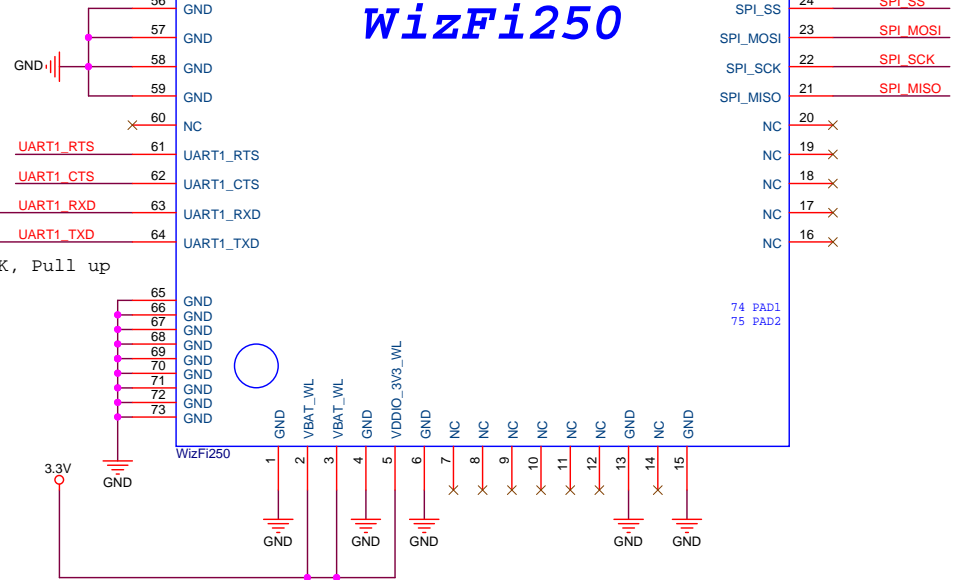
Boot PIN Floating or High : Run Mode
 Boot PIN Low : Boot Mode
 Please monitor the signal of BOOT PIN of your MCU.
 Please stop the UART communication between WizFi250 and your MCU, when BOOT's input value is "LOW".



10K or 4.7K, Pull up

- WiFi_STATUS 48 WI-FI_LED
- MODE_STATUS 49 MODE_LED
- GPIO14 50 GPIO14
- JTAG_TRST 51 JTAG_TRST
- JTAG_TDO 52 JTAG_TDO
- JTAG_TDI 53 JTAG_TDI
- JTAG_TMS 54 JTAG_TMS
- JTAG_TCK 55 JTAG_TCK

WizFi250



Title		
WizFi250 Ref.Schematic		
Size	Document Number	Rev
B	WizFi250 Ref.Schematic	<RevCode>
Date:	Tuesday, July 29, 2014	Sheet 1 of 1