

Table of Contents

How to write the firmware into CMSIS-DAP	1
<i>Writing firmware into the CMSIS-DAP</i>	1
Firmware Download	1
To follow	1

How to write the firmware into CMSIS-DAP

CMSIS-DAP by ARM helps you to write firmware into MCU through USB cable.

When you write firmware into WIZwiki-W7500 with the USB cable, the firmware has written into the CMSIS-DAP first. After that, the firmware will write into WIZwiki-W7500.

Because of this, you are require to update the firmware for the

CMSIS{{:products:wizwiki_w7500:start_getting_started:lpc11u35_wizwiki_w7500_if_crc_20170411.zip}}-DAP, when a new version CMSIS-DAP firmware has released.

This page shows how to write firmware into CMSIS-DAP.

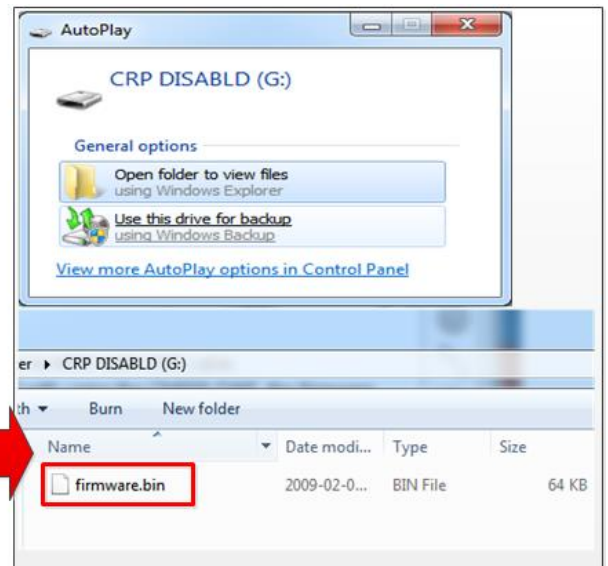
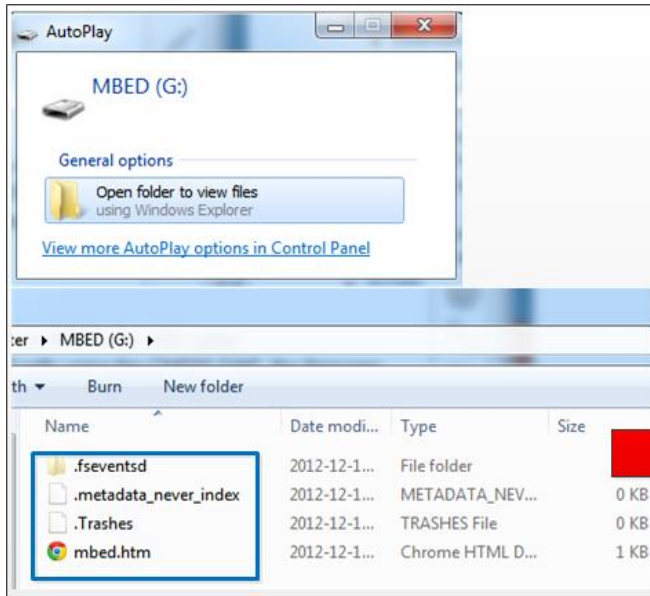
Writing firmware into the CMSIS-DAP

Firmware Download

- [Download WIZwiki-W7500](#)
- [Download WIZwiki-W7500ECO](#)
- [Download WIZwiki-W7500P](#)

To follow

1. With pressing the Reset SW on WIZwiki-W7500, connect the USB cable to WIZwiki-W7500 and wait for a removable disk, CRP_DISABLED, popped up.
2. Then you can find the difference between a normal removable disk and a removable disk with pressing the **Reset SW**.
3. Delete firmware.bin existing in the CRP_DISABLED disk.
4. Drag and Drop or copy the updated firmware to the CRP_DISABLED disk for CMSIS-DAP.



From:
<http://wizwiki.net/wiki/> -

Document Wiki

Permanent link:

http://wizwiki.net/wiki/doku.php/products:wizwiki_w7500:start_getting_started:write_firmware_cmsis_dap

Last update: 2017/04/25 15:06

